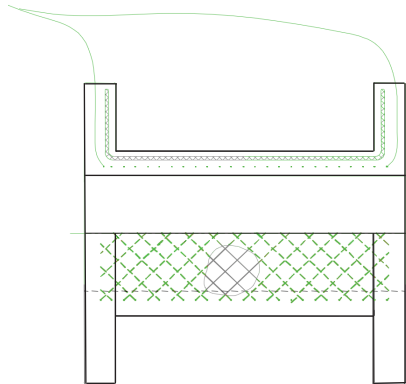


Flowrox™ sensomate sleeves

Flowrox valves are typically used in applications where extreme abrasion and scaling are present. We have developed an early detection sleeve, which will signal locally or at the PLC when the sleeve is beginning to wear. The sleeve change can be scheduled and the worn sleeve replaced before any process downtime is experienced.

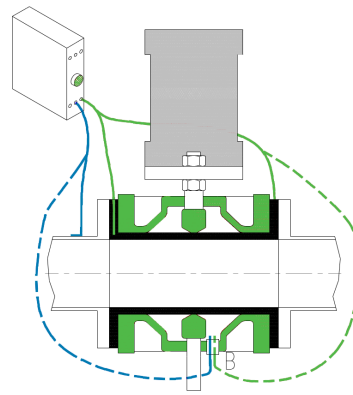
Flowrox sensomate sleeve



The Flowrox sensomate sleeve has a steel mesh vulcanized between the wear layer and the reinforcement cords of the sleeve. Deterioration of the inner wear layer of the sleeve allows the fluid to contact the wire mesh, which creates a change in conductivity between the pipeline and the wire mesh. This change in conductivity will be detected through the MK 9151 control relay and is indicated locally or communicated to the PLC. This wire mesh enables the conductivity through a network of connections and is extremely reliable in high cycling applications.

The valve can also be equipped with a liquid detection plug, which is installed in the bottom of the valve. The liquid detection plug is a simple liquid level sensor, which can also be connected to the MK 9151 control relay to indicate accidental total failure of the sleeve. Flowrox sensomate provides the highest process reliability. Unexpected downtime and unscheduled maintenance can be avoided with this new process technology.

Flowrox sensomate system



SIZE: DN25 (1") – DN300 (12")

Pressure: 0 – 25 bar (362 psi)

Temperature: -50°C (-58°F) – +130°C (266°F).

Higher pressures and bigger sizes upon requests.

